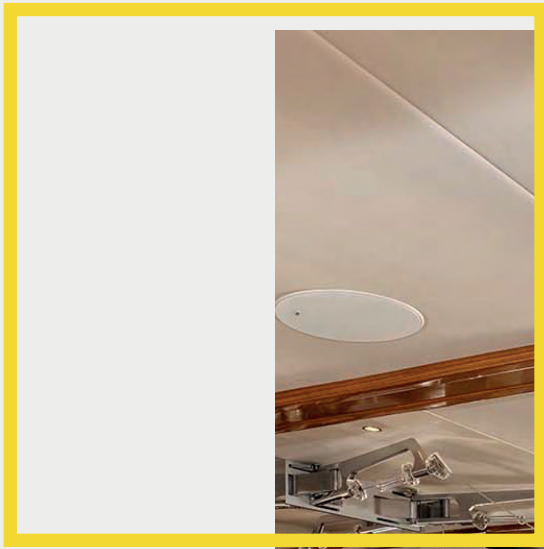




GYM MARINE INTRO

Introduction

GYM MARINE



INTRO

Gym Marine Yachts & Interiors has designed and equipped gyms, spas and wellness spaces on many of the world's most high-profile superyachts.

As specialist wellness designers for the superyacht sector, and with our vast experience in the health & wellness industry, our expert team have an unrivalled understanding of the complexities of gym and spa design at sea.

We are the only consultancy of our kind in the luxury sector, and we offer unique access to almost every major equipment brand in the world.

From design conception through to installation and beyond, our goal is to ensure our clients and partners enjoy total peace of mind.

HOW WE WORK

Beginning with the conceptual design, our team approach a new gym or spa project as a blank canvas. Usually following a site visit or design meeting with the client, we will prepare a floorplan and presentation of equipment based on any specified fitness goals, design intents, space constraints, construction deadlines or other project requirements.

Our job as a wellness designer is to recommend equipment and systems that are most suited to the user and their needs. We are not affiliated with any one brand and therefore make independent recommendations based on a 'best in class' ethos that ensures our clients always get a gym that exceeds their expectations.

When we attend a site to install and commission equipment, we offer a detailed handover and ensure your team are equipped with the necessary support package or care instructions to ensure longevity of the equipment and the space's success.





DETAILED DESIGN

Working with client representatives, interior designers & project managers, our in-house design team work with dedication to realise the design intent within the allocated budget and timeline.

We encourage consideration of lighting design, A/V, flooring, HVAC and ergonomics even at the early stages, and we provide our experience-based recommendations to the project team during conception to ensure that the

space is fit for use. Our design team will produce 2D facility layouts in AutoCAD to plan the space, and will instruct the project team on any structural or aesthetic changes required to accommodate specialist equipment requested by the client*. At this point any custom equipment required will be designed and modelled, and drawings are submitted to the project team for sign off before fabrication.

**3D renderings can also be completed for projects where visualising the space in more detail is required.*

LIAISON + COORDINATION

Gym Marine's involvement in a project may span across a number of years, as our initial designs for a space are often submitted at planning phase, long before construction begins.

We are committed to offering our advice and assistance throughout the entire lifecycle of a project and remain on hand to make revisions or improvements to the design as needed.

Once a final kit list is approved and an order is placed, we will plan the fulfilment with you and schedule an installation date on site. Thanks to our close relationships with our suppliers, we are often able to shorten lead times and avoid the usual pitfalls of sourcing multiple items from a broad range of vendors. As a single source provider for everything in the gym and spa, you just need to liaise with us, and we will do the rest.





EQUIPMENT + FABRICATION

Our range of fitness and wellness equipment spans over 50,000 items, from big name suppliers such as Technogym and Lifefitness to boutique luxury fitness brands like Hock Design.

When we create a gym or spa space for our clients, we assess the entire marketplace to define which products best fit their individual needs. If an off-the-shelf solution from our range is not available, then we work with manufacturing partners in the UK and Europe to create something bespoke. From branding and alternate colour schemes to creating custom storage solutions, we can offer fully customised solutions.



DELIVERY + COMPLETION

With our professional team on site, you can expect a white-glove service and to be left with a working space that is ready to enjoy. Our engineers are fully briefed before arrival and can advise you on operating and maintaining your new equipment.

We remain your central point of contact for all items in the gym after handover and, if

needed, we can attend to all aspects of technical support.

We also offer service and maintenance packages to help protect your investment long into the future.



GYM MARINE +

Warranty Specification | Enhanced Warranty Support

GYM MARINE

STANDARD COVER

Offered on all
Superyacht
Gym Projects

Price **£0**

Not interested in GM+? Our standard cover,
as included with every purchase, comprises:

- + Supplements manufacturer warranties (in accordance with its terms) with parts and remote cover extended to offer world-wide support
- + Remote support and diagnosis via video link
- + Software updates and remote application management
- + Cost of freight for parts **not** included for warranty claim parts (and charged in addition)
- + Labour onboard **not** included (and charged in addition)
- + Worth 6% of goods RRP

It is acknowledged that parts are only available if and for so long as they are available pursuant to the relevant Manufacturer Warranty.

GYM MARINE +

For New Build + Superyacht Gym Projects

Price **£3800**

+ 6% Equipment Value

Gym Marine + International Warranty Cover

- + International servicing of manufacturer warranties (in accordance with terms), over a two year period - including parts, if and for so long as manufacturer warranty is in effect
- + Remote diagnosis and technical support via video link, delivered by Gym Marine senior technicians
- + Free freight for warranty claim parts worldwide
- + Crew training for engineering, interior and AV/IT staff; delivered by video link or in person onboard during an annual service
- + Ongoing training for new staff and rotational crew as stipulated by Gym Marine
- + Preventative maintenance plan delivered with all manuals and documentation via a dedicated online portal
- + Software updates and remote software management of applications where applicable
- + x1 Annual service of all gym equipment, in one of our designated *service areas* (see below) during a *service window* (see below)
**Travel and accommodation not included when servicing takes place outside of service area or service window and is charged in addition*
- + x1 Emergency call out per annum, global coverage

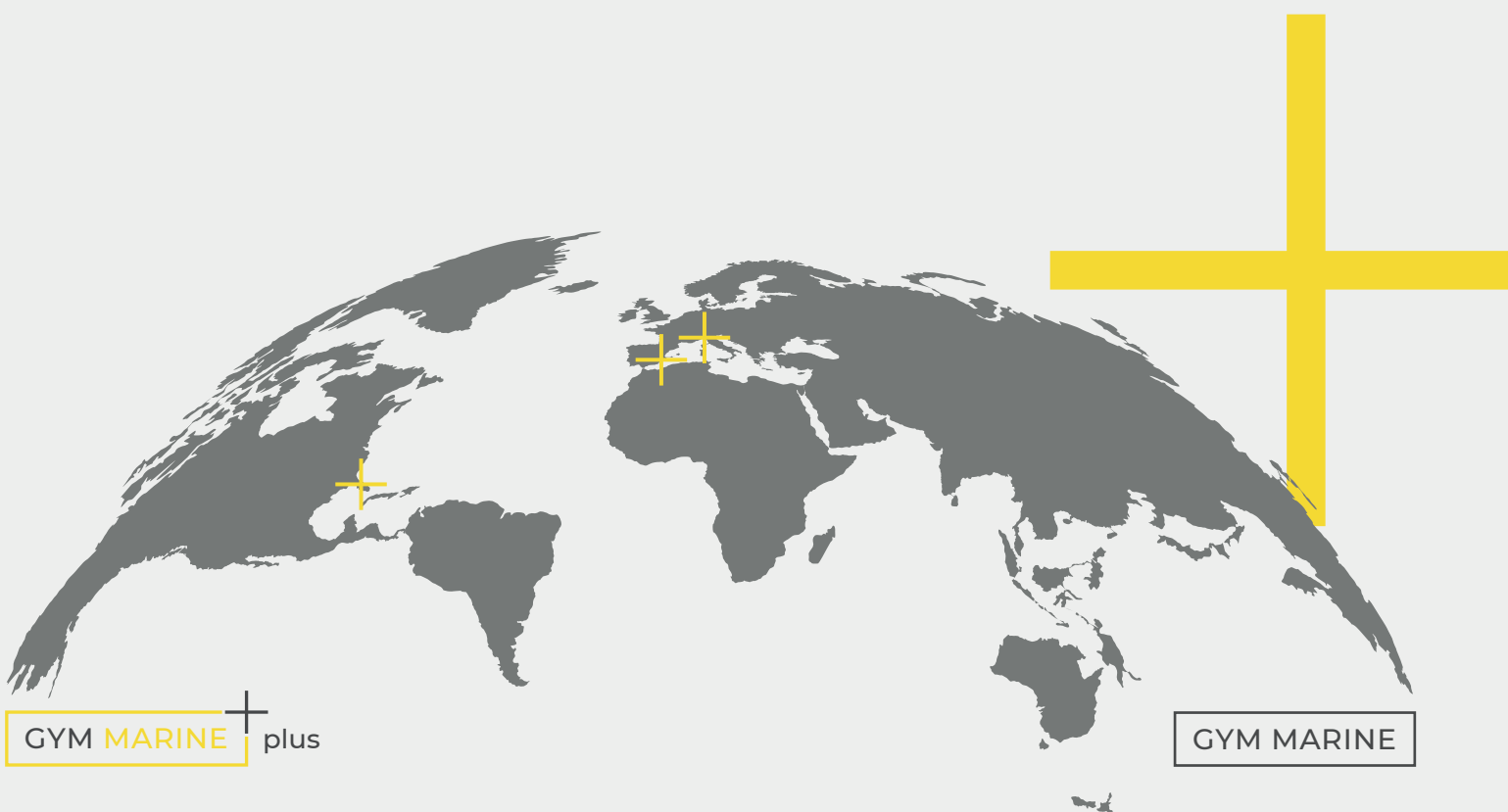
**Travel and accommodation not included and is charged in addition*

Service Areas

- + Monaco, Cannes, Antibes
- + La Ciotat, Toulon
- + Palma de Mallorca, Portals Nous, Port Adriano
- + Barcelona, Tarragona, Vilanova
- + Genova
- + San Remo, Imperia
- + La Spezia, Livorno, Viareggio
- + Fort Lauderdale, West Palm Beach

Service Windows

A Service Window is defined as a date period in which a Gym Marine technician is actively inside a Service Area performing multiple services onboard yachts; in so much as a dedicated trip to a single client is not required (as stipulated by Gym Marine from time to time).



OTHER SERVICES

Spares Kits

- + We recommend our clients work with us to construct an emergency spares kit to keep onboard incase any issues with equipment arise while cruising offshore
- + Spare parts for gym equipment can sometimes be on a long lead time, and our experience tells us that it is best to have some key spares onboard (such as treadmill belts/spare weight machine selector pins) in order to offer guests seamless fault resolution, or to keep the crew gym up and running during a long charter
- + If this is of interest, please make it known to us and we will construct a spares kit for the guest and/or crew gym for delivery in time for the boat's private or commercial use
- + Choose from our 'Essential' spares kit plus recommended extras

Extended Servicing Agreement + Warranty

- + GM+ can be extended to offer servicing, training, shipping of parts and emergency callouts beyond the two-year term
- + Parts will not however be covered under warranty where manufacturer warranty terms have elapsed or been breached, and would be chargeable in addition
- + A longer warranty on certain machines may be possible at point of purchase, please enquire during the design phase and we will seek a price



EQUIPMENT COVERS

Rain Covers for Equipment

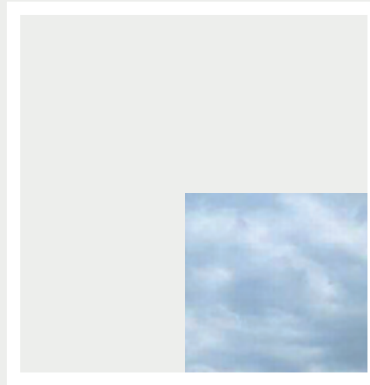
GYM MARINE

RAIN COVERS

Protect your equipment on deck with Gym Marine's collection of rain covers.

These bespoke covers are designed for each specific piece, ensuring a smart fit and maximum protection from the elements. Protecting the equipment from rain, sea spray and atmospheric moisture is essential for preserving the electrics and preventing rust forming on the metal surfaces. If water gets into the internal workings of the machine, the movement mechanism can be seriously affected.

The covers are made from Stamoid Top and have an internal fleece lining. Resistant, durable and easy to clean, the covers also provide 100% UV protection. A wide variety of colours are available, and branding can be applied with embroidery.





CORAL
SPA CONSULTANTS



Part of the Gym Marine Group

GYM MARINE

CORAL SPA CONSULTANTS



Coral Spa Consultants is run by Kayleigh Westgarth, who spent over 12 years working as a masseuse and spa manager aboard some of the world's most prestigious superyachts.

Coral Spa Consultants advise designers, shipyards, or owner's teams during the earlier stages of design and interior space planning to help create a wellness area that functions seamlessly, with a relaxing ambience, and with equipment that is perfectly suited to the treatments on offer.

From ensuring wellness spaces have the necessary flexibility and charter appeal, to hammam and sauna integration and incorporating advanced equipment like cryosaunas, our experience covers it all.

Coral Spa Consultants build on the wealth of knowledge and expertise in the fitness space offered by Gym Marine, and bring that to onboard wellness areas. The two companies work hand in hand to provide the highest levels of customer satisfaction.

HOW WE WORK

Our spa and wellness team will ensure a treatment area is optimised to its full potential – whether the space is holistic or sports and training oriented, taking into account the floor design, lighting, and storage is critical for creating an efficient spa.

We recommend equipment and systems that are best suited to requirements and adhere to space constraints. We make independent recommendations based on a 'best in class' ethos, ensuring we procure the best of what the market has to offer for our clients.

With the design agreed, equipment specified, delivered and installed, we provide on-going support with product and treatment suggestions as well as providing training to your team when needed.





AFTERCARE & TRAINING

As part of the Gym Marine Group, clients of Coral Spa Consultants can take advantage of Gym Marine's fantastic support services. We offer worldwide support as standard, but clients can choose our enhanced warranty package 'Gym Marine Plus', which includes global 48hr emergency callout cover, annual servicing, and crew training. Refresher training for equipment or treatments can be booked at any time with our accredited trainers, or we can assist with brand specific training programmes.

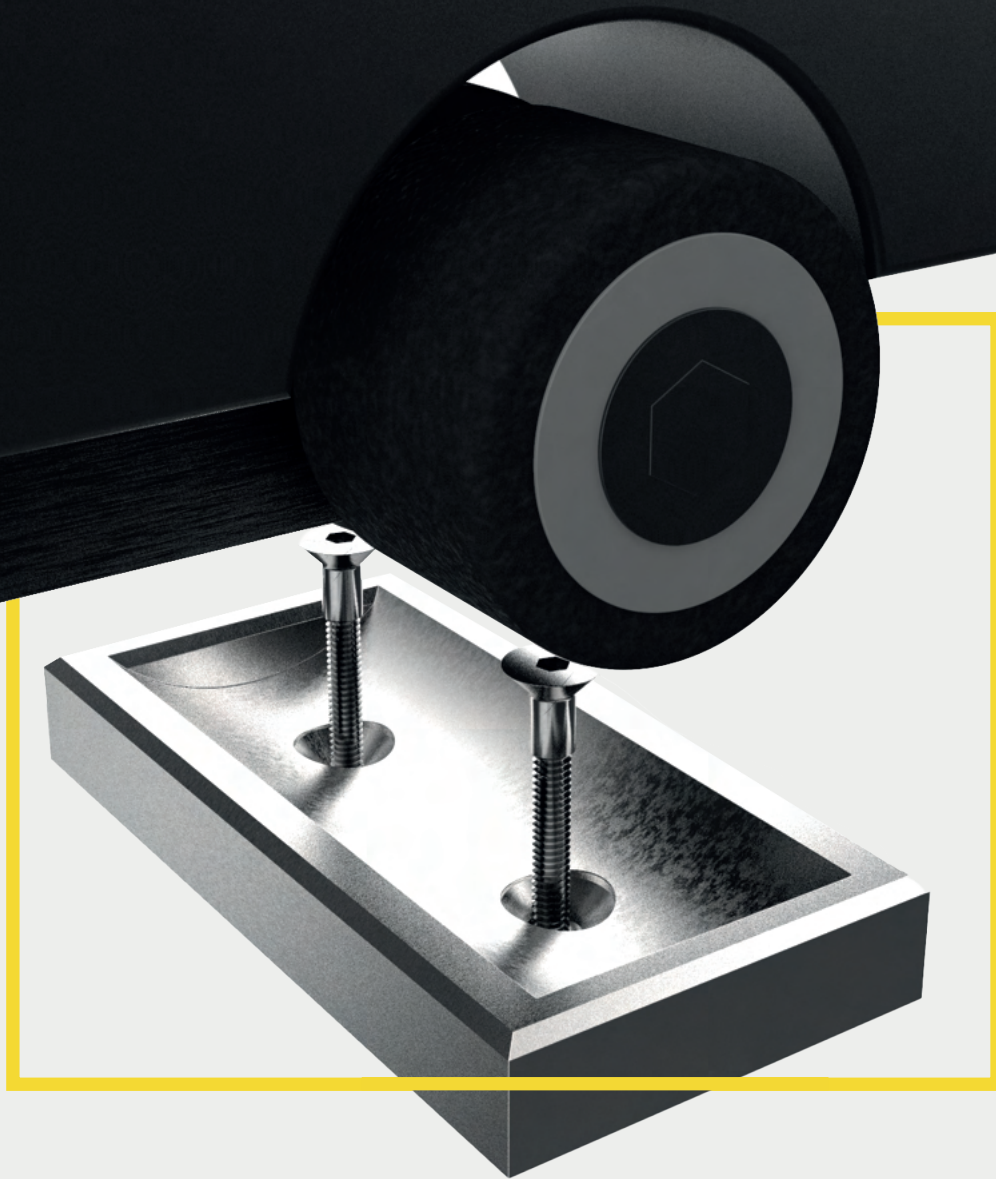
Orders for consumables can also be placed with Coral Spa Consultants, allowing you to order all products from one place and have it delivered to wherever you may be.



SEA FASTENING GUIDE

Bespoke Sea Fastening Kits for Gym Equipment

GYM MARINE



OVERVIEW

Securing large pieces of gym equipment to seagoing vessels is not always the simplest process.

Gym machines tend to have moving parts, and awkwardly shaped feet or contact points with the deck that may or may not be suitable for fixing.

In general, some technical understanding of how a machine will function during use is required to ensure that the fastenings do not inhibit the user's workout or cause long term damage to the machine.

OUR SOLUTION

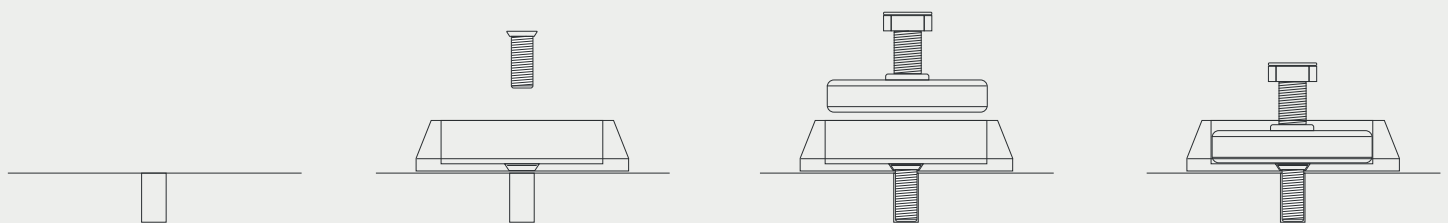
Securing large pieces of gym equipment to seagoing vessels is not always the simplest process.

Gym machines tend to have moving parts, and awkwardly shaped feet or contact points with the deck that may or may not be suitable for fixing.

In general, some technical understanding of how a machine will function during use is required to ensure that the fastenings do not inhibit the user's workout or cause long term damage to the machine.

HOW THEY WORK

The sea fastening is screwed into the deck which then allows the foot of the equipment to securely sit inside.



1. A pilot hole is drilled and a tapped metal plug is fixed in the deck.

2. The sea fastening component is located above the plug and the bolt is screwed into the deck, securing the component in place.

3. The gym equipment is located over the sea fastening component.

4. The foot of the equipment fits securely in the foot to reduce any movement. A felt pad on the bottom of each component reduces damage to the deck.

MATERIALS + DESIGN



- Brackets have a countersunk hole for screwing to deck
- Application of glue is also recommended for extra strength
- All standard fastenings made from 304 grade stainless steel
- 316 grade available for exterior use
- Mirror Polished or Brushed Satin Finish
- PVD Coating available for Matt Black or Bronze appearance
- Bespoke design work can be carried out

We provide a full collection of sea fastening kits for a wide range of the most popular gym equipment ranges including:

- Technogym Artis
- Technogym Personal
- Peloton





CUSTOM EQUIPMENT

Bespoke and Custom Equipment

GYM MARINE



WHAT WE OFFER

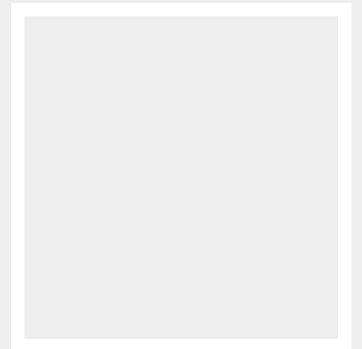
When we create a gym or spa for our clients, we take a look at the whole market to define which products best fit their individual needs. If an off-the-shelf solution from our range is not available, then we work with manufacturing partners in the UK and Europe to create something bespoke. From branding and alternate colour schemes to creating custom storage solutions, going the extra mile for a client with our capability to offer a fully customised solution is something that we take huge pride in as a company.





OUR SOLUTIONS

Past projects have included equipment hand wrapped in leather, respraying metal parts in a bespoke powder coat, reupholstery of standard gym bench pads in a luxury leather, addition of logos and decals in vinyl, embroidery or engraved; or even the creation of fully bespoke storage racks and other innovative pieces of exercise equipment.





CLIENT TESTIMONIALS



WHAT OUR CLIENTS SAY

NUVOLARI  LENARD

Gym equipment has evolved in a big way in recent years. “We usually work with a company called Gym Marine. They provide the service, create layouts and help us understand which machines the owner

may like based on their wish list. They also offer a service that I think is priceless: wherever the boat is in the world, if something goes wrong with the equipment, they can reach you.

Valentina Zannier – Head Interior Designer, Nuvolari Lenard

 **LÜRSEN**

In the last years we have worked on many projects with Gym Marine, both new builds and refit projects. It has always been a seamless and constructive collaboration.

When an OR brings Gym Marine to the table we are always happy. I can only give the highest rating to their level of professionalism.

Alberto Perrone Da Zara – Sales Director Yacht Refit, Lürssen



WINCH DESIGN

Congratulations to Ed and the Gym Marine team on entering a momentous 10th year in business! Their specific expertise in 'best in class' ocean-going gym

installations has always been perfectly on-point, and 100% customer-centric – a really focused and innovative service.

Jim Dixon - Managing Partner, Winch Design



VICKERS STUDIO

Gym Marine are always a true pleasure to work with. Their deep understanding of yachts, along with their exceptional service, has made them an invaluable partner for our gym design needs. One of the standout qualities of Gym Marine is their ability to work within the constraints and tight deadlines of our new build and refit yacht projects. They consistently deliver helpful advice at the consultation stage and their expertise and willingness to offer guidance and suggestions have been instrumental in making informed decisions about our gym

designs. They have proven to be a trusted source of advice, which is something we greatly appreciate.

Their professionalism, expertise, and commitment to meeting our unique needs have made them an integral part of our design process.

We highly recommend Gym Marine, they are a reliable and knowledgeable partner who consistently goes above and beyond to ensure the satisfaction of their clients.

John Vickers – Founder, Vickers Studio

HARRISON EIDSGAARD

Harrison Eidsgaard have been working with Gym Marine since 2015. Their industry knowledge, advice, professionalism and reliability are second to none. They are the

go-to team for all our Gym and Wellness centre requirements. We look forward to collaborating with them on many more projects in the future!

On behalf of Harrison Eidsgaard



WEST NAUTICAL

West Nautical have been working with Gym Marine for a number of years over multiple projects. Ed, Guy and their team always deliver top results with superb services and are always available to help

our team or the crew for setup and training. The best in the business, and looking forward to many years of future collaboration together.

Geoff Moore – Managing Director, West Nautical



SEMarine has worked with Ed and his team at Gym Marine on many new build projects large and small over the years. We find Ed's focus on professional process exemplary. From equipment selection, owner interaction materials, equipment decoration, technical integration design, builder support, delivery, installation and commissioning. It's all first class. If we are working with Gym Marine we know every part of this generally Owner Supply scope will be considered by them and performed

to the highest standard. Gym Marine go the extra mile, they are a lot more than a gym equipment reseller or box shifting service.

At SEMarine we always verify the commercials on behalf of the buyer and can always demonstrate Gym Marine's prices are competitive, fair and reasonable. Gym Marine are our go-to expert when it comes to installing crew and luxury gyms on a yacht.

Simon England - Founder, SEMarine



Ed and his team at Gym Marine offer an unrivalled service in their sphere of providing health and wellness expertise within the yachting industry. From initial concept through detailed design to budgeting, specifications, procurement and aftercare, their knowledge is deep and up to date,

their experience broad, and their client care exemplary. Gym Marine is a very safe pair of hands with whom we feel confident and comfortable. Our area of specialisation is, like that of Gym Marine, challenging and demanding and we are very happy to have Ed's team as an extension of ours

Simon, Dickie and Alex -Founders,
Bannenberg & Rowell Design



ZURETTI

d e s i g n

GymMarine's service is nothing short of exemplary. They have consistently gone above and beyond in every aspect of our collaboration. Their expertise in designing, sourcing, and installing gym equipment specifically suited for the demanding conditions at sea is unrivaled. The quality of their workmanship and attention to detail is extraordinary, ensuring that our gyms are not just functional but also aesthetically pleasing, seamlessly integrated into the luxurious surroundings of our yachts.

The GymMarine team understands that every yacht is different, and they approach each project with a keen focus on customization. They work closely with us to understand our unique needs, preferences, and space constraints, and then craft a solution that perfectly aligns with our requirements. Their ability to deliver tailor-made gymnasiums that optimize space, ensure safety, and provide a diverse range of exercise options is truly remarkable.

One of the aspects that sets GymMarine apart is their dedication to innovation. They constantly stay at the forefront of fitness technology and trends, ensuring that our gyms feature the latest equipment and training methodologies. This dedication to innovation not only enhances the onboard fitness experience but also increases the value of our vessels.

In conclusion, I can confidently say that GymMarine has set a new standard in creating exceptional gymnasiums on yachts. Their commitment to quality, innovation, and customer satisfaction is truly remarkable. We are grateful to have had the opportunity to collaborate with GymMarine and wholeheartedly recommend their services to anyone seeking to elevate the fitness experience on their yachts. They have exceeded our expectations in every way, and for that, we are profoundly grateful.

Matthieu Zuretti – Board Member, Zuretti Designs



I would like to congratulate the team at Gym Marine on ten years of trading. We at Superyacht Technical Services Ltd have used Gym Marine for many years on many projects. The Gym Marine team are extremely helpful throughout the new-build process, from assisting with the

initial specification through to set-up and commissioning of the equipment. We are able to rely on Gym Marine to assist with all aspects at all stages. It is a joy to work with a professional company that are there if and when things go wrong and not simply sell, supply and forget!

Andrew Tree - Principal Consultant,
Superyacht Technical Services Ltd



REYMOND LANGTON

As a leading superyacht interior design firm, we have had the pleasure of collaborating with Gym Marine on numerous projects, the first being the 91 metre Lurssen 'Lady Lara' in 2015 through to our latest delivery the 105 metre Oceanco 'H', and we cannot speak highly enough of their exceptional service and luxury gym equipment.

When it comes to outfitting superyachts with fitness facilities, it is crucial to find equipment that not only meets the highest standards of performance but also seamlessly integrates with the overall interior design aesthetic. Gym Marine has consistently delivered on both fronts, providing us with a range of exquisite gym equipment options that perfectly complement our luxurious interior designs.

The attention to detail and craftsmanship displayed in Gym Marine's products is truly remarkable. Each piece of equipment is meticulously designed, incorporating luxurious materials, sleek finishes, and innovative features. The result is a collection of gym equipment that not only enhances the onboard fitness experience but also adds a touch of elegance and

sophistication to the overall yacht interior. Working with Gym Marine has been an absolute pleasure. Their team of professionals understands the unique challenges and requirements of superyacht design, and they have consistently gone above and beyond to assist us when planning the gym spaces and to ensure that their equipment seamlessly integrates into our design concepts. Their expertise and willingness to collaborate have made the entire process smooth and efficient. We have received nothing but positive feedback from our clients regarding the quality and performance of Gym Marine's products. The durability and reliability of their equipment have been exceptional, withstanding the demands of the marine environment without compromising on functionality or aesthetics. We wholeheartedly recommend Gym Marine to any superyacht owner or interior design firm seeking the finest luxury gym equipment. Their commitment to excellence, attention to detail, and ability to create bespoke solutions make them an invaluable partner in creating extraordinary onboard fitness spaces

Pascale Reymond and Andy Langton -
Founders, Reymond Langton

BURGESS

Burgess has worked with Gym Marine across a number of projects over many years. The service has been first class every time and the commitment to the client

never stops at the point of installation. We look forward to continuing our great relationship together.

Edmund Beckett – Partner, Burgess

Y.CO

From our first collaboration in 2012 on the 90m Luerssen Lady Lara, Gym Company Marine have been involved in many Y.CO managed new builds up to 140m.

Ed, Guy and the team are a responsive and dynamic team ready to find the right

solutions and accommodating to the schedules and needs onboard.

The leaders in the industry for gym installations and supply of the latest kit, we will continue introducing GCM to our New Build Clients as well as for our management fleet.

Donna Green - Senior Project Coordinator YCO



TWW YACHTS

I had the pleasure of working with Edward and Megan on a 50m yacht gym project. The gym space was limited and yet they were able to maximise every last centimetre and meet the client's needs

and expectations. The team is flexible and was able to provide our clients with various styles and solutions to choose from. Overall a very smooth experience and happy customers.

David Westwood - Managing Director, TWW Yachts

HILL ROBINSON

Many congrats to the Gym Marine team with their 10th Anniversary. A truly wonderful team to work with. Ed and team here is to many more years.

Peter van Toor - Head of Procurement
Hill Robinson International Ltd



Gym Marine allow us to provide our clients with a custom package of gym equipment. The lay-out and equipment proposals are tailor-made to each respective yachting project.

Yachting projects are not always the smoothest, but Gym Marine has always been flexible in accommodating any change of plans and we look forward to many more successful projects together!.

Janey Dorreman - Project Manager and Director,
The A Group



Wellness and health facilities play an increasingly essential role in our designs so having a knowledgeable partner to help provide the best solutions for our Clients is vital. Having completed many major yacht

projects together, Gym Marine's wealth of experience and up to date insight of the latest options is invaluable to help us surpass our Clients expectations.

Adrian Chisnell - Yacht Designer, RWD



CHARTER RENTALS

Charter Rentals

GYM MARINE



Gym Marine offers an extensive servicing and maintenance package, carried out by our dedicated team of experienced engineers. From removing the covers and detailing the inside of your equipment to testing their functionality, we provide a complete evaluation whilst maintaining a white-glove service.

Our engineers will undergo a physical assessment of the equipment, examining all the moving parts, including re-tensioning slack belts, lubricating bearings, tensioning cables on strength equipment and lubricating guide rods, as well as checking the alignment of the weight stack locator pins. Touch-screens and heart-rate monitors will be calibrated and sea-fastening brackets will be inspected.

The team will then complete a visual inspection of the equipment, ensuring there is no dangerous corrosion damage to machines in an exterior or semi-exposed environment, recommending a list of wearing parts that should be replaced in the next 6-12 months and advising on necessary external parts to improve aesthetics.

We provide crew training on how to care for your machines, ensuring better longevity of the equipment and less chance of breakdowns during your busy charter season – especially important for those itineraries where support is less easy to obtain!

Charter Rentals

GYM MARINE



SERVICING

Servicing

GYM MARINE

Gym Marine offers an extensive servicing and maintenance package, carried out by our dedicated team of experienced engineers. From removing the covers and detailing the inside of your equipment to testing their functionality, we provide a complete evaluation whilst maintaining a white-glove service.

Our engineers will undergo a physical assessment of the equipment, examining all the moving parts, including re-tensioning slack belts, lubricating bearings, tensioning cables on strength equipment and lubricating guide rods, as well as checking the alignment of the weight stack locator pins. Touch-screens and heart-rate monitors will be calibrated and sea-fastening brackets will be inspected.

The team will then complete a visual inspection of the equipment, ensuring there

is no dangerous corrosion damage to machines in an exterior or semi-exposed environment, recommending a list of wearing parts that should be replaced in the next 6-12 months and advising on necessary external parts to improve aesthetics.

We provide crew training on how to care for your machines, ensuring better longevity of the equipment and less chance of breakdowns during your busy charter season – especially important for those itineraries where support is less easy to obtain!

